

TV & TH Series



R410A Wallmounts 10 EER

TV Series Air Conditioners

TH Series Heat Pumps

Performance

- Efficiency ratings from 10.0 EER & 3.0 COP
- Sizes range from 3 to 5 tons
- Electric heat available from 5 kW to 20 kW—varies with model
- Designed for ducted and non-ducted applications
- AHRI performance certified, ETL safety approved

Features

- ECM blower motors
- Same Dimensions as standard efficiency Units
- R410A refrigerant
- All major components can be accessed from the front for maximum serviceability
- Single step scroll compressor standard, 2 step available
- 1000-hour salt spray, baked on polyester finish
- Low /high pressure switches standard
- Built in circuit breakers with lockable outside access door (disconnect on 460 volt models)
- Barometric damper with washable outside air filter standard
- Phase monitor is standard on all 3-phase units



Table of Contents

Model Key	3
Nomenclature & Options	3
TV Series Air Conditioners	4, 5
TH Series Heat Pumps	6, 7
TV & TH Series Total Cooling Capacity vs. Ambient Temperature	8
Unit Dimensions	9



Eubank is a dynamic manufacturer of air conditioning and refrigeration equipment including Wallmount packaged air conditioners, Wallmount packaged heat pumps, refrigeration condensing units, refrigeration unit coolers, evaporator coils, condenser coils and other heat exchanger products marketed under Eubank and other brand names.

Eubank is a participating member in AHRI's certification programs. All Eubank products are certified to UL safety standards.

Eubank is a technologically advanced, quality oriented and customer focused premium supplier that you can count on.

Eubank is a registered trademark of National Coil Company. Due to the manufacturer's policy of continuous product improvement, the manufacturer reserves the right to make changes without notice. All product specifications reflect available information at the printing of this brochure.

© 2011 National Coil Company. All rights reserved.



Model Key: Air Conditioners & Heat Pumps

NOMENCLATURE

TV 36 S 10 - F B D - ***

MODEL SERIES

TV = AIR CONDITIONER 10 EER SERIES
TH = HEAT PUMP 10 EER SERIES
SV = AIR CONDITIONER LOW SOUND SERIES
SH = HEAT PUMP LOW SOUND SERIES

NOMINAL COOLING CAPACITY

36 = 36,000 BTU/H NOMINAL

ELECTRICAL SERVICE

S = 208-230/1/60

T = 208-230/3/60

D = 460/3/60

ELECTRIC STRIP HEATER

10 = 10 kW

Options Code

D=1" Disposable Filter

P= 2" Pleated Filter

B= Mesa Tan cabinet color (Std)

G= Grey cabinet color

W= White cabinet color

FRESH AIR

F = BAROMETRIC DAMPER (Std)

M = MOTORIZED DAMPER

E = ECONOMIZER

B = SOLID DOOR

P = PRV

V = ERV

Options

- ◆ Electric Heaters
- ◆ High/ low pressure alarm contacts
- ◆ 2" pleated filters
- ◆ Supply and Filter return grilles
- ◆ Coated Coils—options code 4
- ◆ Economizers
- ◆ 2 Step Compressors—options code 5
- ◆ Hot Gas Reheat for Humid Conditions—options code R
- ◆ Powered room ventilators (PRV)
- ◆ Energy recovery ventilators (ERV)
- ◆ Lead—lag controllers (not available for heat pumps)
- ◆ 4 & 5 ton models with 3 ton back plates
- ◆ Choice of skin color: Mesa Tan, White, Gray
- ◆ Thermostats
- ◆ Sound Attenuation Modules
- ◆ Low Ambient Control—options code C

Eubank[®]
NATIONAL COIL COMPANY

TV Series Air Conditioners Specifications

MODEL	TV36S**	TV36T**	TV36D**	TV48S**	TV48T**	TV48D**	TV60S**	TV60T**	TV60D**
COOLING CAPACITY [J]	33,000			44,000			58,000		
EER [J]	10			10.2			10		
VOLTS/PHASE/HERTZ	208-230/1/60	208-230/3/60	460/3/60	208-230/1/60	208-230/3/60	460/3/60	208-230/1/60	208-230/3/60	460/3/60
COMPRESSOR DATA									
TYPE	Scroll								
RATED LOAD AMPS	16.7	10.4	5.7	21.8	13.7	6.2	26.3	15.6	7.7
OUTDOOR FAN DATA									
HP	1/6			1/2					
FULL LOAD AMPS	1.2		0.7	2.8		1.4	2.8		1.4
FAN - DIA/CFM	22"/2000			22"/3000					
BLOWER DATA									
HP, RPM	1/3			1/2					
FULL LOAD AMPS	1.6		1.3	3.2		2.6	3.2		2.6
RATED CFM/ESP [K]	1250/0.15			1700/0.20			2200/0.20		
VENTILATION PACKAGE									
BAROMETRIC DAMPER	ADJUSTABLE BAROMETRIC DAMPER STANDARD ON ALL								
BAROMETRIC FILTER	PERMANENT WASHABLE 7" X 29" X 1/4"								
MAX FRESH AIR - CFM% [L]	310 (25%)			425 (25%)			550 (25%)		
RETURN AIR FILTER	14 or 16" X 30" X 1" DISPOSABLE			20" X 30" X 1" DISPOSABLE					
WEIGHT - SHIPPING NET									
	370/350			515/500			520/500		

COOLING PERFORMANCE MODEL	AMBIENT TEMPERATURE (°F)			
	95		80	
	TOTAL	SENSIBLE	TOTAL	SENSIBLE
TV36	33,000	24,400	35,300	26,100
TV48	44,000	32,700	47,000	35,000
TV60	58,000	42,900	62,000	46,000

AIR CONDITIONER HEATER MODEL	BTU* OUTPUT	* AMPS	SHIP WT.	APPROVED UNIT AND HEATER COMBINATION								
				36-1	48-1	60-1	36-3	48-3	60-3	36-4	48-4	60-4
ETA1-05-AC	17,000	20.8	15	X	X	X						
ETA1-10-AC	34,000	41.6	16	X	X	X						
ETA1-15	51,000	62.5	18	X	X	X						
ETA1-20	51,000	62.5	18		X	X						
ETA3-06	20,000	14.4	15				X	X	X			
ETA3-09	31,000	21.7	18				X	X	X			
ETA3-15-AC	51,000	36.1					X	X	X			
ETA3-18-AC	61,000	43.3	18					X	X			
ETA4-06	20,000	7.2	15							X	X	X
ETA4-09	31,000	10.8	18							X	X	X
ETA4-15	51,000	18	18							X	X	X

[J] Rated in accordance with ANSI/ARI Standard 390-2003

[K] Includes factory-installed filters and wet coils

[L] CFM with standard return air filter grille in place

TV Series Air Conditioners Electrical Data

Model No. & Electric Heater Kw [1]	Volt / Phase	No. of Field Power Ckts	SINGLE FIELD CIRCUIT				DUAL FIELD CIRCUIT										
			MINIMUM CIRCUIT AMPACITY	MAX OVER CURRENT PROTECTION [2]	FIELD POWER WIRE SIZE [3],[4],[5]	GROUND WIRE SIZE	MIN WIRE AMPACITY		MAX OVER CURRENT PROTECTION [2]		FIELD POWER WIRE SIZE [3],[4],[5]		GROUND WIRE SIZE				
							CKT1	CKT2	CKT1	CKT2	CKT1	CKT2	CKT1	CKT2			
TV36S00	208-230/1	1	24	30	12	12											
5		1	28	30	10	10											
10		1	54	60	6	10											
15		1 OR 2	80	90	4	8	28	52	30	60	10	6	10	10			
TV36T00	208-230/3	1	16	30	14	14											
6		1	20	30	12	12											
9		1	29	30	10	10											
15		1	47	60	8	10											
TV36D00	460/3	1	9	15	14	14											
6		1	11	15	14	14											
9		1	15	30	14	14											
15		1	24	30	12	12											
TV48S00	208-230/1	1	33	60	10	10											
5		1	33	60	10	10											
10		1	56	60	6	10											
15		1 OR 2	82	90	4	8	30	52	60	60	10	6	10	10			
20		1 OR 2	108	125	2	6	56	52	60	60	6	6	10	10			
TV48T00	208-230/3	1	23	30	12	12											
6		1	23	30	12	12											
9		1	31	60	10	10											
15		1	49	60	8	10											
18		1	58	60	6	10											
TV48D00	460/3	1	12	15	14	14											
6		1	12	15	14	14											
9		1	17	30	14	14											
15		1	26	30	10	10											
TV60S00	208-230/1	1	39	60	8	10											
5		1	39	60	8	10											
10		1	56	60	6	10											
15		1 OR 2	82	90	4	8	30	52	60	60	10	6	10	10			
20		1 OR 2	108	125	2	6	56	52	60	60	6	6	10	10			
TV60T00	208-230/3	1	26	30	10	10											
6		1	26	30	10	10											
9		1	31	60	10	10											
15		1	49	60	8	10											
18		1	58	60	6	10											
TV60D00	460/3	1	14	15	14	14											
6		1	14	15	14	14											
9		1	17	30	14	14											
15		1	26	30	10	10											

[1] Heater data were based on 240V or 480V AC respectively.

[2] Maximum recommended size for "Time Delay" fuse or HACR circuit breaker.

[3] Power supply wire size and ground wire size were based on AWG 75C rise, NEC Article 310 and Table 310.15(B)(16).

[4] For single power conductor, sized per NEC Table 310.15(B)(17).

[5] Power supply wire 75C rated COPPER CONDUCTOR ONLY.

TH Series Heat Pumps Specifications

MODEL	TH36B**A1	TH36B**A3	TH36B**A4	TH48B**A1	TH48B**A3	TH48B**A4	TH60B**A1	TH60B**A3	TH60B**A4
Cooling Capacity (J)	33,000			44,000			58,000		
EER (J)	10			10.2			10		
HEATING CAPACITY [J]	33,000			43,500			56,000		
COP [J]	3.0								
VOLTS/PHASE/HERTZ	208-230/1/60	208-230/3/60	460/3/60	208-230/1/60	208-230/3/60	460/3/60	208-230/1/60	208-230/3/60	460/3/60
COMPRESSOR DATA									
TYPE	Scroll								
RATED LOAD AMPS	16.7	10.4	5.7	21.8	13.7	6.2	26.3	15.6	7.7
OUTDOOR FAN DATA									
HP, RPM	1/6			1/2					
FULL LOAD AMPS	1.2		0.7	2.8		1.4	2.8		1.4
FAN - DIA/CFM	22"/2000			22"/3000					
BLOWER DATA									
HP, RPM	1/3			1/2					
FULL LOAD AMPS	1.6		1.3	3.2		2.6	3.2		2.6
RATED CFM/ESP [K]	1250/0.15			1700/0.20			2200/0.20		
VENTILATION PACKAGE									
BAROMETRIC DAMPER	ADJUSTABLE BAROMETRIC DAMPER								
BAROMETRIC FILTER	PERMANENT WASHABLE 7" X 29" X 1/4"								
MAX FRESH AIR - CFM% [L]	310			425			550		
RETURN AIR FILTER	14 or 16" X 30" X 1" DISPOSABLE			20" X 30" X 1" DISPOSABLE					
WEIGHT - SHIPPING NET									
	380/360			525/510			530/510		

HP COOLING PERFORMANCE MODEL	AMBIENT TEMPERATURE (°F)			
	95		80	
	TOTAL	SENSIBLE	TOTAL	SENSIBLE
TH36	33,000	24,400	35,300	26,100
TH48	44,000	32,700	47,000	35,000
TH60	58,000	42,900	62,000	46,000

HP HEATING PERFORMANCE MODEL	AMBIENT TEMPERATURE (°F)	
	47	17
	TH36	33,000
TH48	43,500	27,000
TH60	56,000	35,000

HEAT PUMP HEATER MODEL	BTU* OUTPUT	* AMPS	SHIP	APPROVED UNIT AND HEATER COMBINATION								
			WT.	36-1	48-1	60-1	36-3	48-3	60-3	36-4	48-4	60-4
ETA1-05-HP	17,000	20.8	15	X	X	X						
ETA1-10-HP	34,000	41.6	16	X	X	X						
ETA3-06	20,000	14.4	15				X	X	X			
ETA3-09	31,000	21.7	18				X	X	X			
ETA4-06	20,000	7.2	15							X	X	X
ETA4-09	31,000	10.8	18							X	X	X

TH Series Heat Pumps Electrical Data

Model No. & Electric Heater Kw [1]	Volt / Phase	No. of Field Power Ckts	SINGLE FIELD CIRCUIT				DUAL FIELD CIRCUIT								
			MIN CIRCUIT AMPACITY	MAX OVER CURRENT PROTECTION [2]	FIELD POWER WIRE SIZE [3],[4],[5]	GROUND WIRE SIZE	MIN WIRE AMPACITY		MAX OVER CURRENT PROTECTION [2]		FIELD POWER WIRE SIZE [3],[4],[5]		GROUND WIRE SIZE		
							CKT1	CKT2	CKT1	CKT2	CKT1	CKT2	CKT1	CKT2	
TH36S00 5 10	208-230/1	1	24	30	12	12									
		1	50	60	8	10									
		1 OR 2	76	90	4	8	24	52	30	60	12	6	12	10	
TH36T00 6 9	208-230/3	1	16	30	14	14									
		1	34	60	10	10									
		1	43	60	8	10									
TH36D00 6 9	460/3	1	9	15	14	14									
		1	18	30	14	14									
		1	23	30	12	12									
TH48S00 5 10	208-230/1	1	33	60	10	10									
		1	59	60	6	10									
		1 OR 2	85	90	3	8	33	52	60	60	10	6	10	10	
TH48T00 6 9	208-230/3	1	23	30	12	12									
		1	41	60	8	10									
		1	50	60	6	10									
TH48D00 6 9	460/3	1	12	15	14	14									
		1	21	30	12	12									
		1	25	30	10	10									
TH60S00 5 10	208-230/1	1	39	60	8	10									
		1 OR 2	65	90	4	8	39	26	60	30	8	10	10	10	
		1 OR 2	91	100	3	8	39	52	60	60	8	6	10	10	
TH60T00 6 9	208-230/3	1	26	30	10	10									
		1	44	60	8	10									
		1	53	60	6	10									
TH60D00 6 9	460/3	1	14	15	14	14									
		1	23	30	12	12									
		1	27	30	10	10									

[1] Heater data were based on 240V or 480V AC respectively.

[2] Maximum recommended size for "Time Delay" fuse or HACR circuit breaker.

[3] Power supply wire size and ground wire size were based on AWG 75C rise, NEC Article 310 and Table 310.15(B)(16).

[4] For single power conductor, sized per NEC Table 310.15(B)(17).

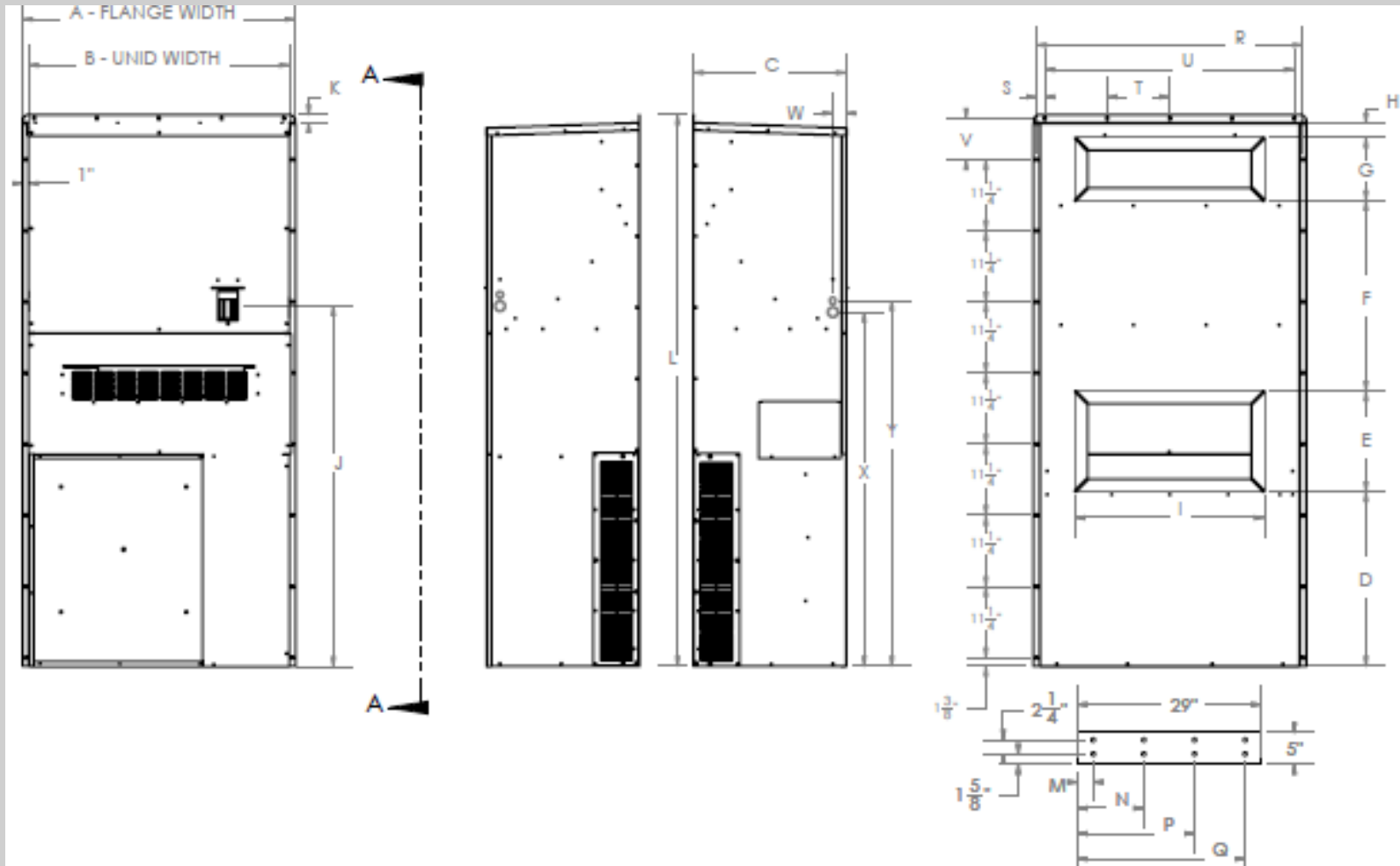
[5] Power supply wire 75C rated Copper conductor only.

TV & TH SERIES Total Cooling Capacity Vs. Ambient Temperature

MODEL	I.D. (°F) DB/WB	AMBIENT TEMPERATURE (°F)								
		75	80	85	90	95	100	105	110	115
436	75/62	33900	33300	32600	32000	31200	30500	29700	28900	28100
	80/67	35700	35200	34400	33800	33000	32200	31400	30500	29700
	85/72	37700	37100	36300	35500	34800	34000	33200		
448	75/62	48100	47200	46300	45400	43500	42800	41500	41000	40000
	80/67	50900	50000	49000	48000	44000	43500	42500	42000	41000
	85/72	53700	52800	51800	50800	49700	48600	47400		
460	75/62	58300	57300	56100	55000	53700	52400	51000	49600	43900
	80/67	61600	60500	59400	58200	58000	55600	54200	52600	46400
	85/72	65000	64000	62700	61500	60200	58800	57400		



TV & TH SERIES Unit Dimensions



MODEL	A	B	C	D	E	F	G	H	I	J	K	L	M
36	40	38	18 3/4	28 1/2	14	18	8	1 7/8	28	50 1/2	1 1/8	71 1/2	2 1/2
48/60	43	41 1/8	24 1/8	27 1/2	16	30	10	2 1/4	30	57 1/8	1 1/8	87 1/8	2 1/2

MODEL	N	P	Q	R	S	T	U	V	W	X	Y		
36	10 1/2	18 1/2	26 1/2	38 7/8	1 1/8	9 1/8	36 3/8	2 1/8	2	48 1/4	50		
48/60	10 1/2	18 1/2	26 1/2	42 1/8	1 1/4	9 7/8	39 3/8	6 1/2	2	56	57 7/8		

TV & TH Series



Eubank is a registered trademark of National Coil Company. Due to manufacturer's policy of continuous product improvement, the manufacturer reserves the right to make changes without notice. All product specifications reflect available information at the printing of this brochure.

All rights reserved.



Eubank 03/2014